

What Pump Motor Do I Need?



Pump Motor Information Is 1st Needed From Existing Motor Name Plate

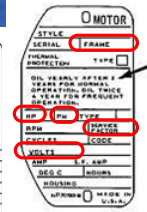
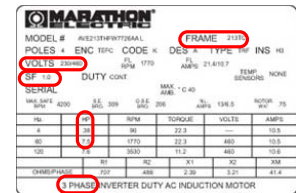
Typical Motor Name Plate Locations



Typical Motor Name Plate

LL	
THERMALLY PROTECTED MET57ABN (SA)	
MOTOR MOD C4BH2DAII	SER 2J93
A VOLTS 115/230	B HP 1/2
F.L.A.	C PH 1
RPM 3450	D FR 48Y HZ 60
MAX LOADS AMPS 8.8 / 4.4	E SF 1.3
INSUL CLASS B	AMB 40° C TIME RATING CONT
TYPE C	A.O. SMITH CORP

Typical Motor Name Plate



Typical Motor Name Plates

This Is The Information We Need To Match a Replacement Motor

A. Volts. _____ This can be (115/230) , (208 /230) or (208/230/460)

B. HP. _____ Horsepower of the Motor

C. PH. _____ Phase of the motor. This will be 1 or 3

D. FR. _____ Frame of the motor. 48Y, 56, etc.

E. SF. _____ Service factor of the motor. 1.25,1.35, 1.65